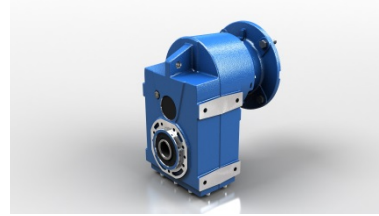
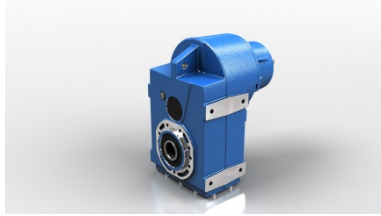


SHAFT MOUNTED GEAR REDUCERS S Serie



CHARACTERISTICS

Sizes: 050–060–080–100–125–140–150

- *Power from 0,12 kW up to 45 kW with three phase 4 pole motors
- *Reduction ratios between 4,06 and 394,69
- *Torque max 9.500 Nm
- *Admissible radial loads max 30.000 N

Sizes: 050–060–080–100–125

- *Universal casing
- *Versions: S... C Foot-flange mounting / Hollow shaf – S... D Foot-flange mounting / Solid shaft – S... L Foot-flange mounting / Shrink disc shaft
- *Gearing with 2 and 3 reduction stages
- *Modularity
- *Gears hardened and tempered with shaved or ground profile
- *Cases in EN-GJL-200 grey cast iron for high strength and optimized with FEM analysis
- *Excellent mechanical strength
- *Load capacity calculated to ISO 6336, DIN 3990 and AGMA 2001
- *Painted with RAL 5010 blue epoxy-polyester powder

Sizes: 140–150

- *Universal casing
- *Versions: S... C Foot-flange mounting / Hollow shaft, S... L Foot-flange mounting / Shrink disc shaft
- *Gearing with 2 and 3 reduction stages
- *Gears hardened and tempered with ground profile
- *Cases in EN-GJL-200 grey cast iron
- *Load capacity calculated to ISO 6336, DIN 3990 and AGMA 2001
- *Gearboxes supplied without lubricant
- *Painted with RAL 5010 blue epoxy-polyester powder

RANGE

| | Ø [mm] | M2 [Nm] Max | i | |
|-------------|---------|-------------|------|--------|
| | | | Min | Max |
| S050 | 30 | 350 | 8,63 | 314,21 |
| S060 | 35 | 600 | 8,00 | 267,16 |
| S080 | 40 - 45 | 1.000 | 7,34 | 360,58 |
| S100 | 45 - 50 | 1.600 | 8,06 | 394,69 |
| S125 | 55 - 60 | 3.000 | 8,48 | 238,93 |
| S140 | 65 - 70 | 4.800 | 4,11 | 273,41 |
| S150 | 80 - 90 | 9.500 | 4,06 | 253,35 |